

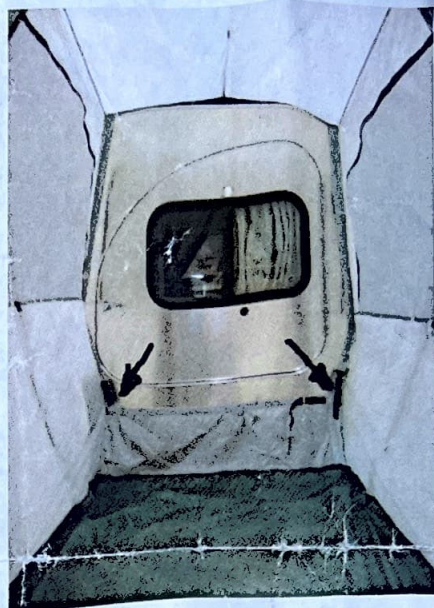
## Side Tent Setup

- To make the tent as water tight as possible, we recommend that you seal the seams with a silicone tent seam sealer, available at most sporting goods stores.
2. If you have a roof rack, the roof rack must be removed before installing the tent.
  3. Put roof straps in place. Hook the hook on the trim on the far side of the camper. Align the front hook with the front of the door. Align the rear hook with the rear of the door. Lay the straps across the roof.
  4. Place the tent on the ground in front of the trailer door. Locate the tent roof flap on the tent. (it is the flap with the shot pipe in the center.)
  5. On each end of the roof flap there is a buckle. Snap the buckles to the roof straps. (The pipe should be on top)
  6. Adjust the roof straps until the seam of the roof flap lines up with the edge of the roof.
  7. Locate the middle tent stake loop (with pocket) on the fender side of the tent floor. Install a tent stake, into the ground, directly below the front, outside corner of the fender, near the tire.
  8. On the opposite side of the tent, locate the middle tent stake loop (with pocket). Install a tent stake, into the ground, about 10 inches from the side of the trailer, pulling the floor tight, side to side.
  9. Pull the floor tight and install two more tent stakes on the outside corners, near the tent's door.
  10. Locate the front awning pole and slide into the front sleeve of the tent roof. Align the hole in the center of the pole with the hole in the center of the sleeve.
  11. Locate and assemble the collapsible ridgepole. Install one end of the ridgepole into the pocket at the center of the roof flap and the other end into the center hole of the awning pole.
  12. Hook the three roof hooks onto the ridgepole.
  13. Locate the side poles and extend them and lock the push button into the third hole from the end. Adjust both poles at this point.
  14. On the fender side of the tent, put the pointed end of the pole through the loop at the side of the awning. Put the pointed end into the hole in the end of the awning pole.
  15. Put the flat end of the pole into the pocket on the side of the tent floor below the fender (by stake).





16. Repeat on the other side.
17. Adjust the pole length to tighten the tent.
18. Open the front door of the tent and go inside.
19. Inside, locate the large hooks. Hook the front hook under the side of the body, in front of the door. Pull on the strap and buckle to tighten.
20. Locate the rear hook, hook it under the side of the body, directly in front of the fender. Pull up most of the slack but do not make it tight.



21. Outside the trailer:

Locate one of the straps with a buckle and hook. Snap the buckle together above the fender. Run the strap over the fender and hook the hook to the rear of the fender. Adjust the buckle to pull the strap tight and pull the side of the tent back over the fender. (see picture above right) You may need to go inside the tent and tighten or loosen the strap at the rear of the door.

22. Outside the trailer: Locate the other strap with a buckle and hook. Snap the buckle together above the front marker light. Put the hook to the front of the body above the marker light. Adjust the strap to remove the slack. Take the tail end of the strap and tie it to the doorstep. You may need to go inside the tent and tighten or loosen the strap at the front.



23. Inside the tent, make sure that the tent is pulled back on both sides of the trailer door so the door can be opened without interfering.

24. Inside the tent, adjust the buckle below the trailer door to remove excess bagging.
25. Make sure that the seam on the roof flap is still aligned with the edge of the roof. And that all straps and hooks are secure.
26. On the sides of the tent, snap the loops around the side tent poles.

To take down the tent, reverse the steps. Unbuckle the straps, but leave them adjusted for next time. They will be approximately the same length each time. Shorten the side poles before removing them.

